

300X

300 MM

Vitrified Parking Tiles

Step Riser Series

HEAVY DUTY

PARKING TILES

300 x 300 mm



R-01



S-01



Anti Slip



100%
Water Proof



UV Resistant



PUNCH
Surface



9 mm
Thickness

HEAVY DUTY

PARKING TILES

300 x 300 mm



R-02



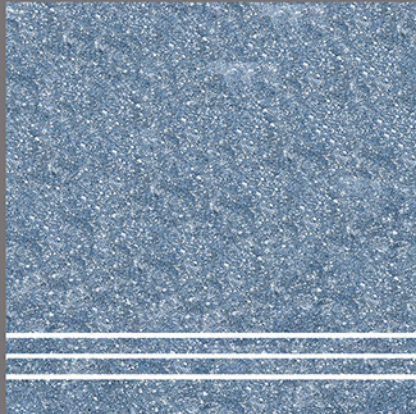
R-03



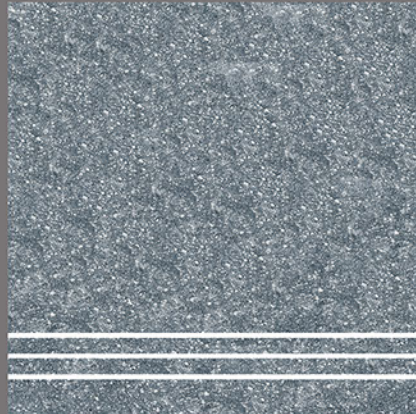
R-04



R-05



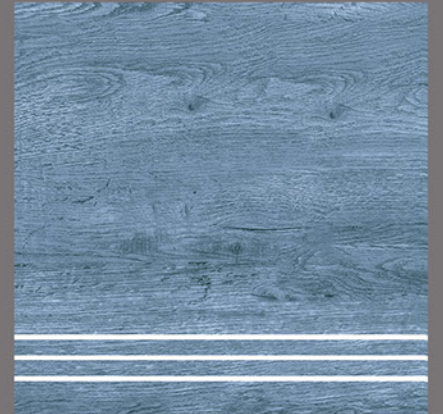
S-02



S-03



S-04



S-05



Anti Slip



100%
Water Proof



UV Resistant



PUNCH
Surface



9 mm
Thickness

HEAVY DUTY

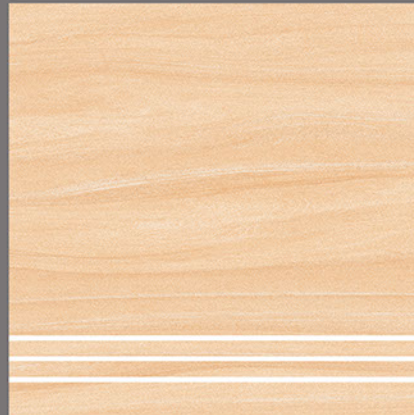


PARKING TILES

300 x 300 mm



R-06



S-06



Anti Slip



100%
Water Proof



UV Resistant



PUNCH
Surface



9 mm
Thickness

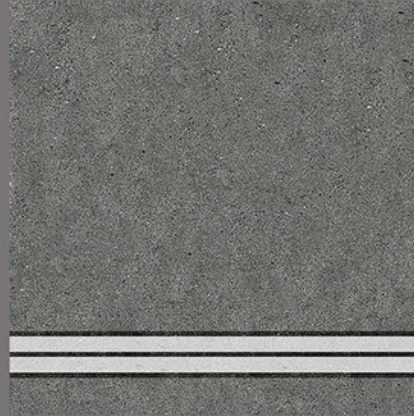
HEAVY DUTY

PARKING TILES

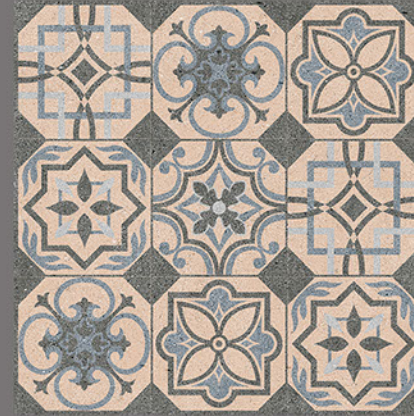
300 x 300 mm



R-08 PLAIN



S-08



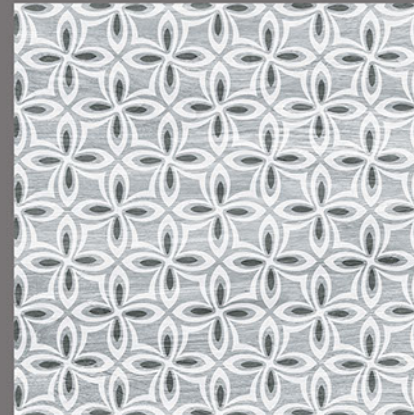
R-08



R-09 PLAIN



S-09



R-09



Anti Slip



100%
Water Proof



UV Resistant



PUNCH
Surface



9 mm
Thickness

HEAVY DUTY

PARKING TILES

300 x 300 mm



R-10 PLAIN



S-10



R-10



Anti Slip



100%
Water Proof



UV Resistant



PUNCH
Surface



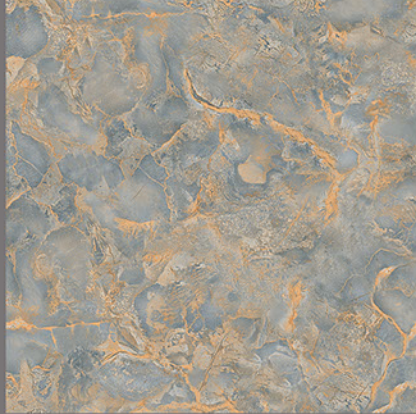
9 mm
Thickness

HEAVY DUTY

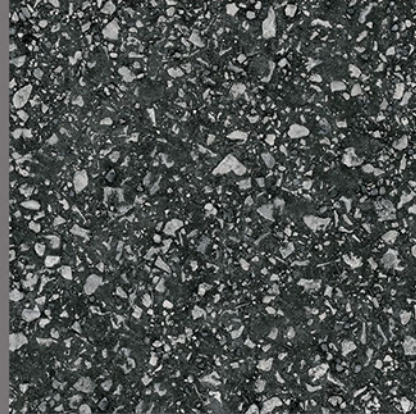


PARKING TILES

300 x 300 mm



R-07



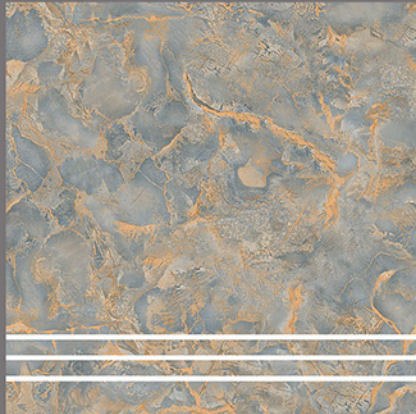
R-11



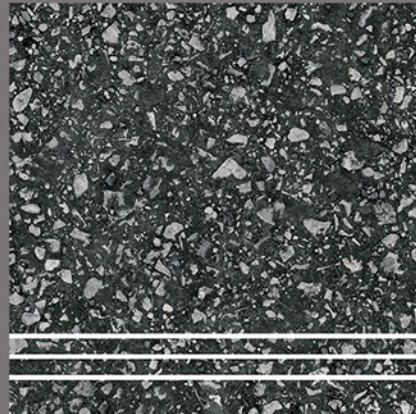
R-12



R-13



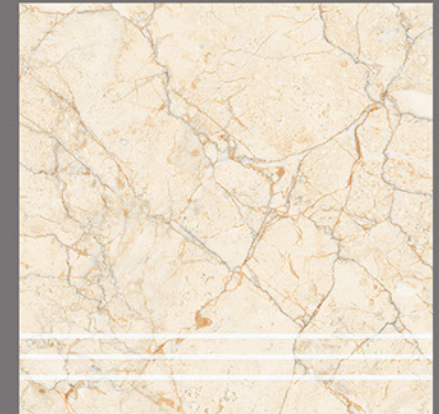
S-07



S-11



S-12



S-13



Anti Slip



100%
Water Proof



UV Resistant



PUNCH
Surface



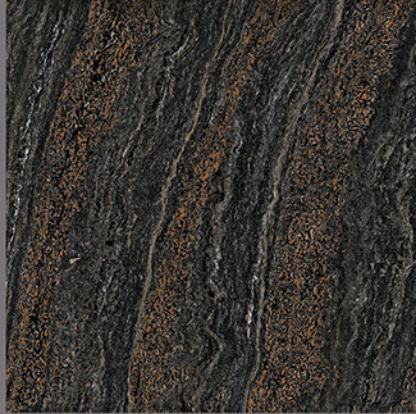
9 mm
Thickness

HEAVY DUTY



PARKING TILES

300 x 300 mm



R-17



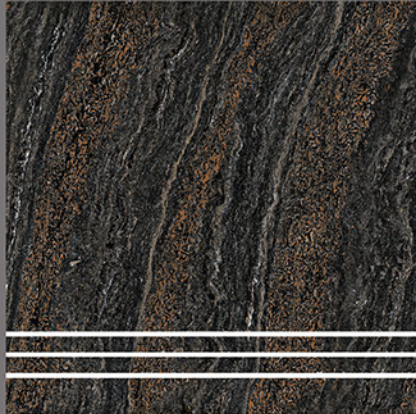
R-18



R-19



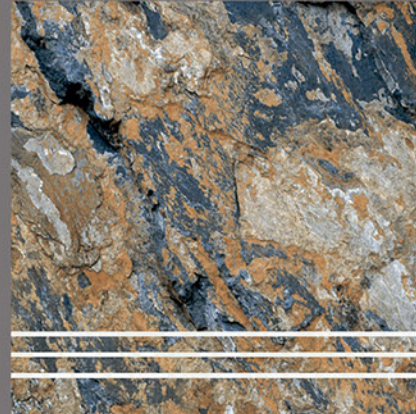
R-20



S-17



S-18



S-19



S-20



Anti Slip



100%
Water Proof



UV Resistant



PUNCH
Surface



9 mm
Thickness

HEAVY DUTY

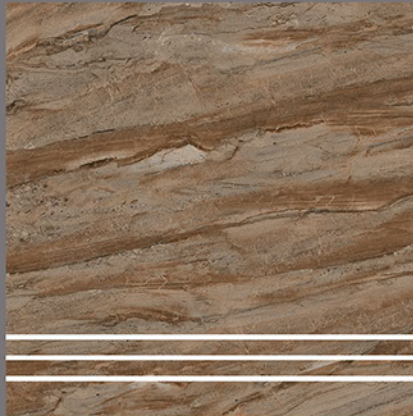


PARKING TILES

300 x 300 mm



R-22



S-22



Anti Slip



100%
Water Proof



UV Resistant



PUNCH
Surface



9 mm
Thickness

HEAVY DUTY

PARKING TILES

300 x 300 mm



R-21



R-23



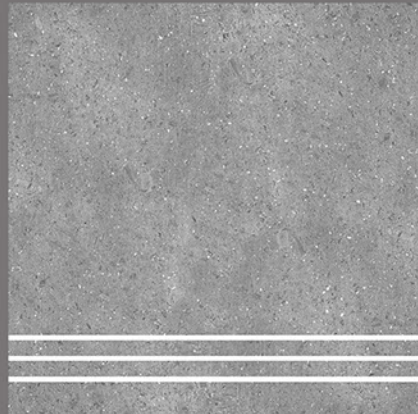
R-101



R-102



S-21



S-23



S-101



S-102



Anti Slip



100%
Water Proof



UV Resistant



PUNCH
Surface



9 mm
Thickness

HEAVY DUTY

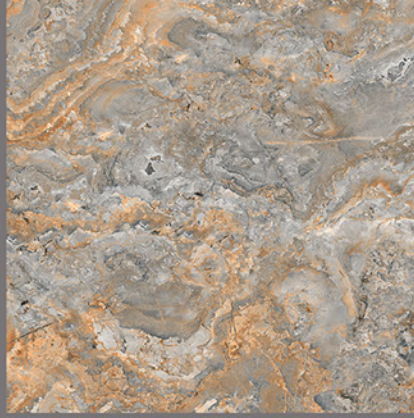


PARKING TILES

300 x 300 mm



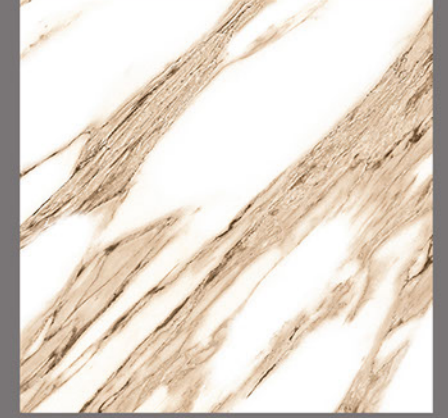
R-103



R-104



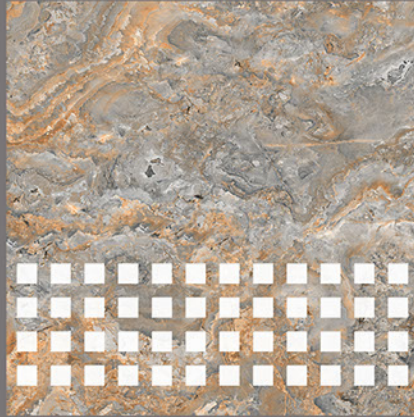
R-105



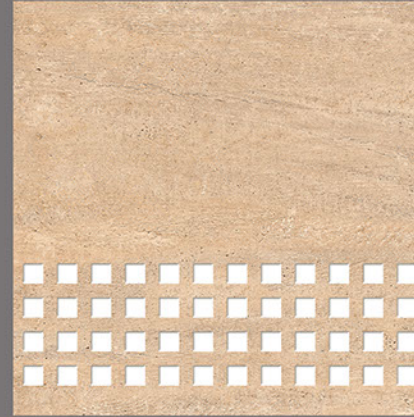
R-106



S-103



S-104



S-105



S-106



Anti Slip



100%
Water Proof



UV Resistant



PUNCH
Surface



9 mm
Thickness

HEAVY DUTY

PARKING TILES

300 x 300 mm



R-109



S-109



Anti Slip



100%
Water Proof



UV Resistant



PUNCH
Surface



9 mm
Thickness

HEAVY DUTY

PARKING TILES

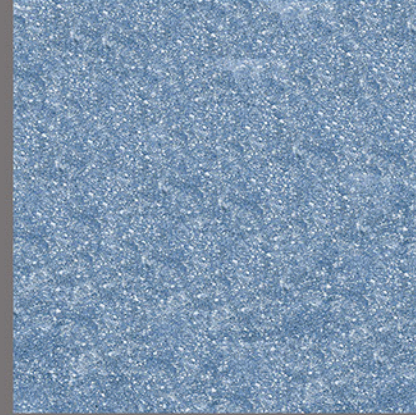
300 x 300 mm



R-107



R-108



R-110



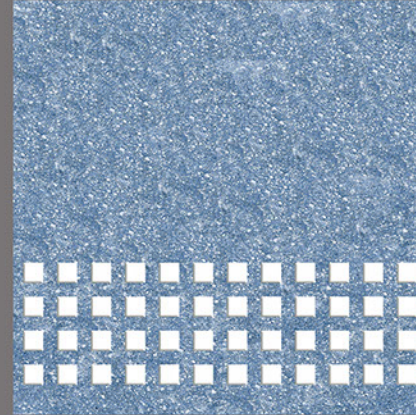
R-111



S-107



S-108



S-110



S-111



Anti Slip



100%
Water Proof



UV Resistant



PUNCH
Surface



9 mm
Thickness

PACKING DETAILS

Size	Series	Nominal Thickness	Number of Tiles	Area	Weight Per Box
300 x 300 mm	Digital Parking	9.00 mm (Approx.)	8 Pieces / Box	0.72 Sq. Mtr.	13.5 Kg. (Approx.)

APPLICATIONS



AIRPORT TERMINALS



HOTELS



OFFICES



RESTAURANTS - CAFES



WORKSHOPS



SUPER MARKETS



SHOPPING MALLS



DOMESTIC



HOSPITALS



SCHOOLS

Note : Colours Shown are as accurate as the limitations of the printing process will allow. Prospective customers are advised to inspect a sample of the tile before ordering. Every effort has been made to ensure the accuracy of the information given. However, the company reserves the right to change the specifications without prior notice.